

inloom  
fabrics

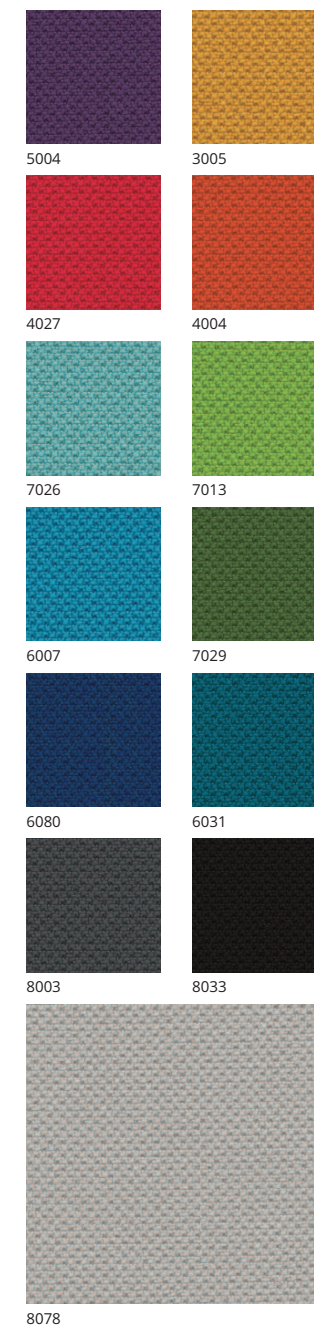
SELECTION

**BONDAI** Medium Hazard Crib 5



34 colourways available

**ALBA** Medium Hazard Crib 5

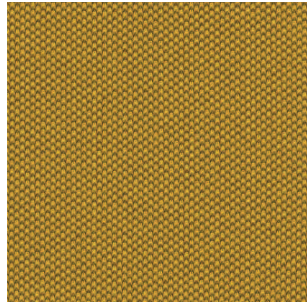


25 colourways available

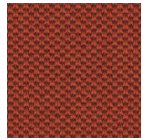
inloom



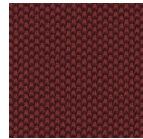
## ONE Medium Hazard Crib 5



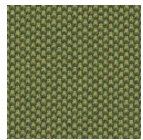
3530



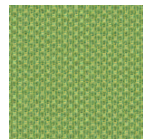
4566



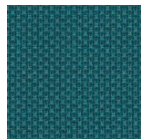
4503



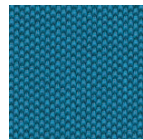
7521



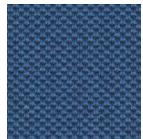
7022



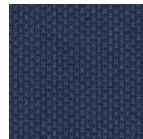
7033



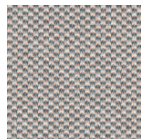
6591



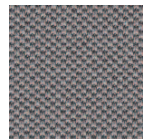
6512



6017



8504



8532



8033



8017

40 colourways available

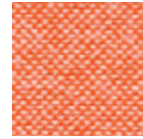
inloom

[www.inloomfabrics.com](http://www.inloomfabrics.com)

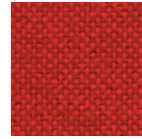
## JET Medium Hazard Crib 5



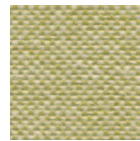
3090



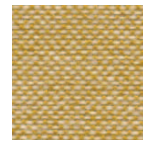
9301



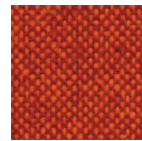
9401



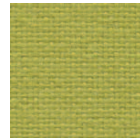
9701



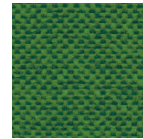
9305



9402



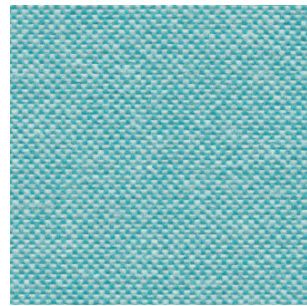
7041



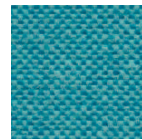
9704



7014



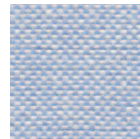
9610



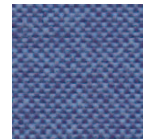
9609



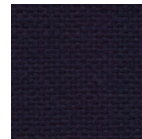
6091



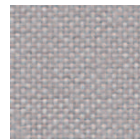
9600



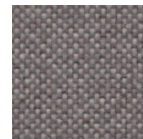
9601



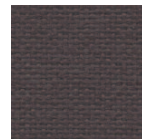
6098



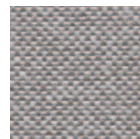
9803



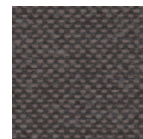
9805



8017



9804



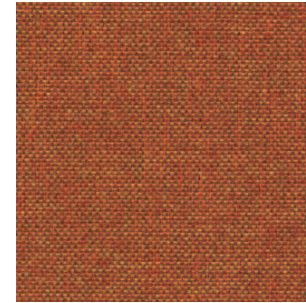
9281



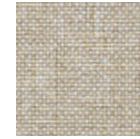
8033

66 colourways available

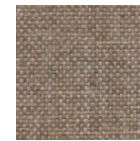
## ROCCIA Medium Hazard Crib 5



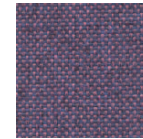
4501



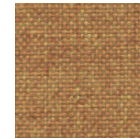
1502



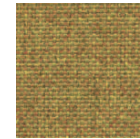
1503



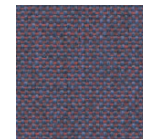
5502



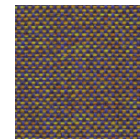
3502



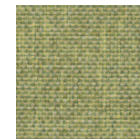
3508



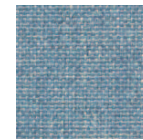
5501



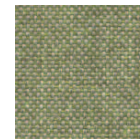
6508



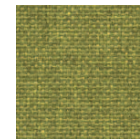
7503



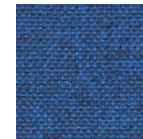
6501



7504



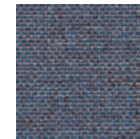
7502



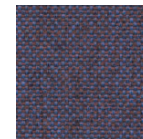
6505



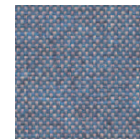
6503



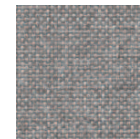
6504



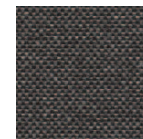
6506



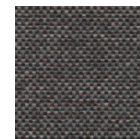
6502



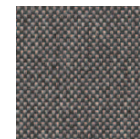
8501



8504



8030



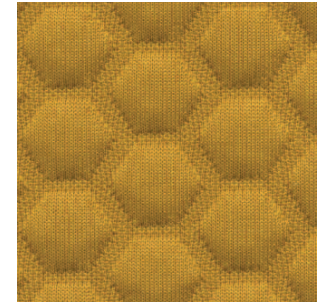
8502

42 colourways available

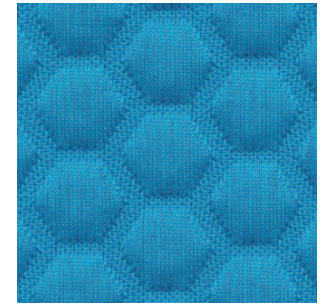
inloom

[www.inloomfabrics.com](http://www.inloomfabrics.com)

## SPAZIO



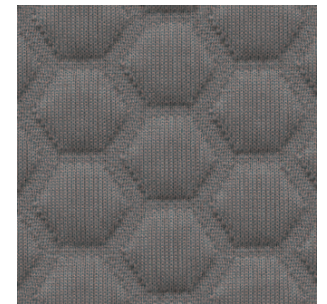
3030



6091



6017



8017

16 colourways available

## WHY INLOOM?

### FRESH NEW FABRICS AND COLOURS

Our versatile range of fabrics showcase our commitment to providing a **choice of colour** and technical innovation in our textile offerings. The selection features an array of designs, tones and structures, underpinned by the practical requirements of **durability** and **flame retardancy**.

### SUSTAINABLE CHOICES

**Sustainability** is a key priority for inloom, we are committed to offering fabric ranges which allow for sustainable choices to be made. Our processes factor in **environmental** concerns, **quality standards** and **social responsibility**. For this reason, we prioritise sustainable product sourcing, evaluating the environmental impact of the textiles and ensuring all our suppliers share the same commitments.

All of our fabrics are certified to the **Standard 100 label by OEKO-TEX®**. In addition some of our ranges have been awarded the **EU Ecolabel** (for environmental excellence). Furthermore, some of our fabrics are made completely from **recycled polyester** and are subsequently certified to the **Global Recycling Standard**.

## WHY THESE FABRICS?

**BONDAI** An entry level classic crepe weave fabric which offers **Medium Hazard flammability** and high durability performance.

**ALBA** Subtly textured dobby weave fabric which provides a sophisticated appearance, at a cost-effective price point which offers **Medium Hazard flammability**.

**ONE** Produced entirely from **recycled waste plastic bottles**. The knitted construction offers a smooth and elegant appearance in both single and dual-tones. 60 recycled PET bottles make 1m of One.

**JET** Soft wool like touch in a Trevira CS composition which provides **Medium Hazard flammability**. Available in a vast colour palette of 66 solid and two-tone colourways.

**ROCCIA** A melange fabric which has a soft fine touch in Trevira CS and provides **Medium Hazard flammability**. Available in 42 sophisticated colourways which include many natural and rustic shades.

**SPAZIO** A 3D knitted fabric produced entirely from **recycled waste plastic bottles**. The 3D knit provides a raised geometric design which gives a very soft touch. Spazio can be matched with the corresponding colour from One. 100 recycled PET bottles make 1m of Spazio.

### TECHNICAL SPECIFICATION

| Range  | Composition               | BS7176<br>Low Hazard<br>(Cigarette<br>& Match) | BS7176<br>Medium<br>Hazard<br>(Crib 5) | Abrasion | EU<br>Ecolab | Global<br>Recycling<br>Standard | OEKO-TEX® |
|--------|---------------------------|--|--|----------|--------------|---------------------------------|-----------|
| Bondai | 100% Polyester            | ✓  | ✓                                      | 150,000  |              |                                 | ✓         |
| Alba   | 100% Polyester            | ✓  | ✓                                      | 100,000  |              |                                 | ✓         |
| One    | 100% Recycled Polyester   | ✓  | ✓                                      | 100,000  |              | ✓                               | ✓         |
| Jet    | 100% Trevira CS Polyester | ✓  | ✓                                      | 65,000   | ✓            |                                 | ✓         |
| Roccia | 100% Trevira CS Polyester | ✓  | ✓                                      | 70,000   | ✓            |                                 | ✓         |
| Spazio | 100% Recycled Polyester   | ✓  |  | 50,000   |              | ✓                               | ✓         |

For further information, please visit our website [www.inloomfabrics.com](http://www.inloomfabrics.com) including:

Download PDF swatch cards

View full colour ranges

Technical specifications

Fire certificates

Cleaning guide